



DBF-3900

DIGITAL BLACKBOX FISHFINDER



DIGITAL SIGNAL
FILTER



HISTORY



BOTTOM HARDNESS
AND ROUGHNESS

Strong and Reliable for Heavy Duty Professional Fishing!

The **DBF-3900** is a strong-built piece of equipment, designed for working at sea environment. The 4th generation of a successful professional fish finder tested in the worst operational conditions. It features a marine grade aluminum chassis built with rust resistant materials to prevent any damage to electronic components. The internal distribution minimizes interference both from an inside and outside source. Since this fish finder is black box type, it can be used with any commercial computer monitor, which means high performance at low cost.

A user-friendly software, designed for the professional fisherman who needs a strong and simple working tool, is one of its most appreciated features. Digital image and synthesized transceiver post-processing, allowing frequency setting from 15 kHz to 250 kHz, place this equipment on the edge of fish finding technology. A work trip HISTORY file, containing up to 30 working days and navigational data, can be stored in a solid state hard drive within an industrial grade computer. No mobile parts and marine rough made casing mean more reliability and an extended lifetime.



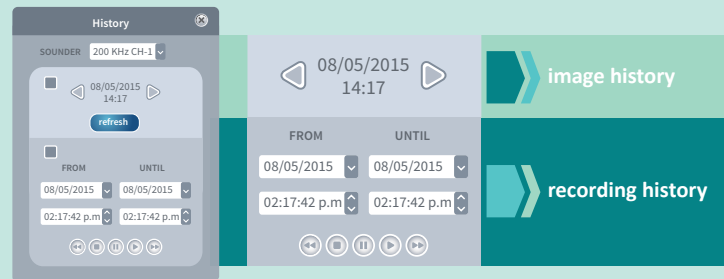
DBF-3900

DIGITAL BLACKBOX FISH FINDER

- **DIGITAL SYNTHESIZED TRANSCIEVER** allows the operator for frequency adjustment between 15 kHz to 250 kHz.
- **DIGITAL SIGNAL FILTER** post processing improves dramatically the target presentation on screen.
- **ETHERNET CONNECTION** allows more stable operation and flexibility for an accurate installation in different working environments.
- **STRONG ALUMINUM DOUBLE H SHAPED CHASSIS** designed to maximize strength and resistance for high seas professional fishing.
- **NO FAN DESIGN** due to a new low temperature working design meaning no dust, grease or salt water inside, increasing the equipment lifetime.
- **BLACK BOX** configuration allows the user to connect any size or type of monitor from 15”.
- **VERY HIGH SENSITIVITY** with a high dinamic range (115 dB).
- **AUTO RESTORING SYSTEM** to recover from undesired software problems with a simple solution.

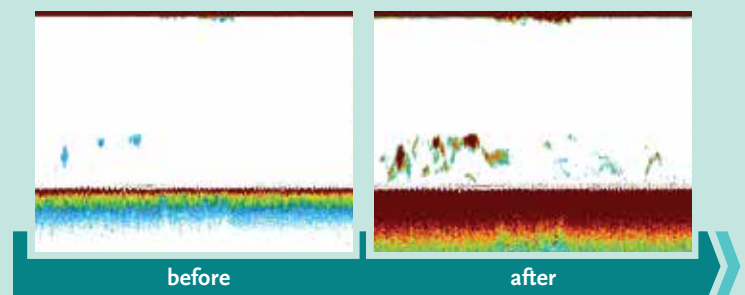
reworking history

It provides a large memory with up to 30 working days and complete navigational data attached. This feature allows the professional fisherman to store a working trip for later review and reworking.



smart image management

This concept includes a complete set of tools to improve the image output. The system allows up to 7 colour patterns. The user can adjust a wide variety of image settings in real time. The new friendly user interface is also a part of this concept.



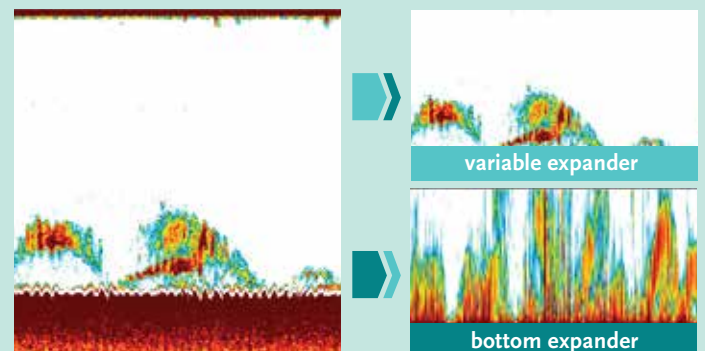
mixer

This tool allows you to mix up to **2 frequencies in one image**. With this feature the user can get an improved output because of the synergy obtained by processing the information received in different frequencies as one.

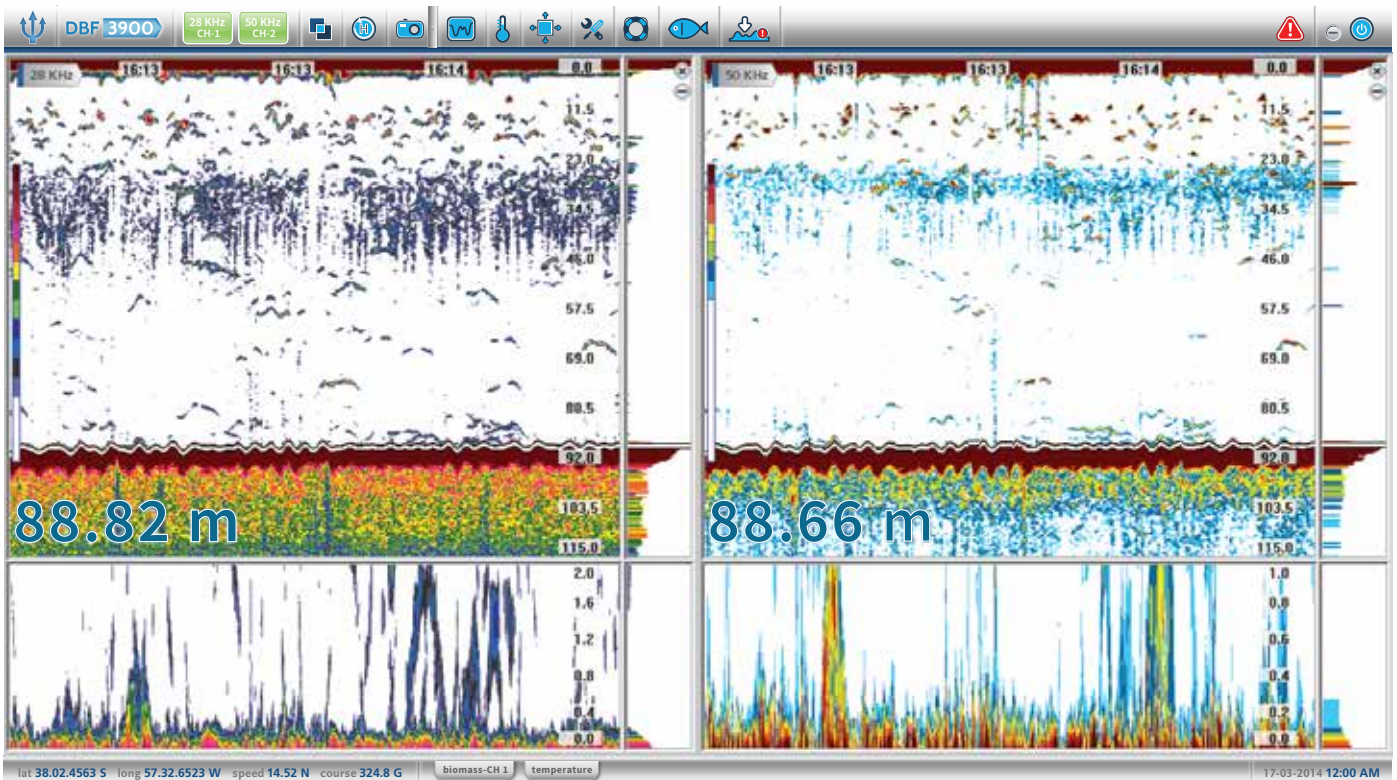


expander

This product has the most powerful expander in the market. The user can set up to **1 meter bottom expander**, which is a very important tool for demersal species trawl fishing. You can also expand the adjustable portion of the image.



Look and feel friendly user interface!



NEW INTERFACE smart and modern. More user-friendly.

RESIZABLE WINDOWS allows the user to adjust the desired size keeping the desktop clean and organized.

NEW ALARMS and graphic transceiver status indicator.

NEW TOOLBAR with shortcut buttons to get every function faster.

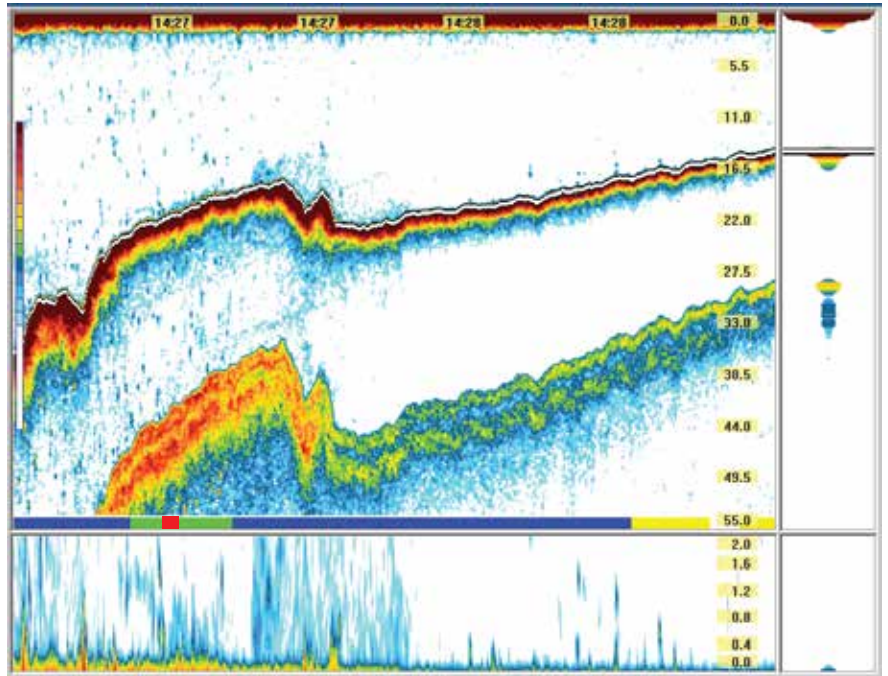
SMART STATUS BAR with all your navigation info.

Hardness and Roughness for bottom analysis

This tool allows to establish if the bottom is stone, gravel, mud or sand, by analyzing the hardness and roughness profile.

By studying the bottom, the user can make decisions related to the target species, as well as the most suitable place for the draft. The bar indicates the bottom type through a preset color code.

Although the system suggests standard values, the user can adjust the parameters for a better identification of the bottom type in his work area.



Hardness and Roughness Window

FISH FINDER | specifications & dimensions

PROCESSOR UNIT



■ GENERAL

Operating Frequencies

From 1 to 2 synthesized transceivers working from 15 to 250 kHz.

Output Power 1 W to 3 kW

Pulse length 0.05 to 2.5 ms

Sound Speed

1410 to 1530 m/s adjustable.

TX Rate

1200 pulse/min max.

Digital Filters

3 noise filters / 2 interference filters / 1 smooth filter

History

Up to 30 working days + Navigational Data

■ DISPLAY

Display

1024x780 px to 1920x1080 px (2 displays)

Color

7/12/15 colours

Display Mode

Day / Night

Ranges

5 to 6400 m

Shift

0 to 6395 m

Marker Zoom/Bottom-lock Expansion Ranges

1 to 6400 m

Display mode

Sounder / Sounder + Fish Loupe / Sounder + Expander /

Sounder + Fish Loupe + Expander

Picture Advance Direction

Right to Left

Picture Advance Speed

4/1, 2/1, Stop, 1/1, 1/2, 1/4, 1/8, 1/16, 1/32, 1/64

External Trigger

Input / Output , Raising / Falling Edge

Alarms

Audio-visual bottom and fish alarm

Language

English / Spanish

Others

Bottom Hardness Graphic / Water Temp Graphic / GPS Data

Graphic / Auto Scale / Internal Pitch and Roll Compensation

■ DATA INTERFACE

NMEA0183 (Ver. 1.5, 2.0 or 3.0)

Input: GGA, GLL, RMC, VTG, GGA, ZDA, PFEC.

Output: DBT, DPT, RMC, Roxann Interface

■ ENVIRONMENTAL CONDITIONS

Temperature

-10°C to 55°C

Humidity

95% non condensed

■ POWER SUPPLY

9-35 VDC / 10 A / 65 W max.

■ EQUIPMENT LIST

Blackbox Unit

Installation Materials / Trackball Unit

User Manual

FOR FURTHER INFORMATION, CONTACT:



ELECTRONICA NAVAL S.A.

Acha 452 - 7603BNJ

Mar del Plata - Bs. As. - Argentina

te. +54 223 4800978 - fax 4894444

ventas@enaval.com.ar

www.enaval.com.ar