



DBF-4000

DIGITAL BLACKBOX FISHFINDER



DIGITAL SIGNAL
FILTER



HISTORY



15-250 kHz

CUSTOM FREQUENCY
ADJUSTMENT

Strong and Reliable for Heavy Duty Professional Fishing!

The DBF-4000 is a strong-built piece of equipment, designed for working at sea environment. The 4th generation of a successful professional fish finder tested in the worst operational conditions. It features a marine grade aluminum chassis built with rust resistant materials to prevent any damage to electronic components. The internal distribution minimizes interference both from an inside and outside source. Since this fish finder is black box type, it can be used with any commercial computer monitor, which means high performance at low cost.

A user-friendly software, designed for the professional fisherman who needs a strong and simple working tool, is one of its most appreciated features. Digital image and synthesized transceiver post-processing, allowing frequency setting from 15 kHz to 250 kHz, place this equipment on the edge of fish finding technology. A work trip HISTORY file, containing up to 30 working days and navigational data, can be stored in a solid state hard drive within an industrial grade computer. No mobile parts and marine rough made casing mean more reliability and an extended lifetime.



DBF-4000

DIGITAL BLACKBOX FISH FINDER

- **DIGITAL SYNTHESIZED TRANSCEIVER** allows the operator for frequency adjustment between 15 kHz to 250 kHz.
- **DIGITAL SIGNAL FILTER** post processing improves dramatically the target presentation on screen.
- **ETHERNET CONNECTION** allows more stable operation and flexibility for an accurate installation in different working environments.
- **STRONG ALUMINUM DOUBLE H SHAPED CHASSIS** designed to maximize strength and resistance for high seas professional fishing.
- **NO FAN DESIGN** due to a new low temperature working design meaning no dust, grease or salt water inside, increasing the equipment lifetime.
- **BLACK BOX** configuration allows the user to connect any size or type of monitor from 15"
- **VERY HIGH SENSITIVITY** with a high dynamic range (115 dB).
- **AUTO RESTORING SYSTEM** to recover from undesired software problems with a simple solution.

reworking history

It provides a large memory with up to 30 working days and complete navigational data attached. This feature allows the professional fisherman to store a working trip for later review and reworking.

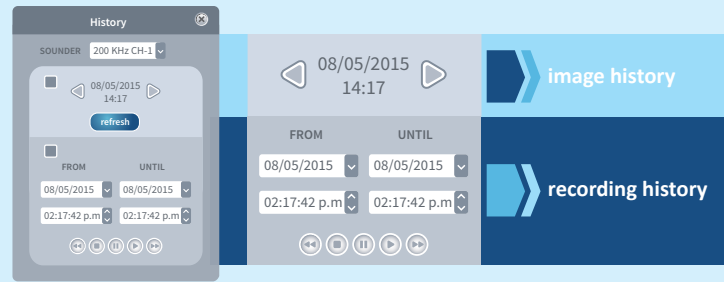
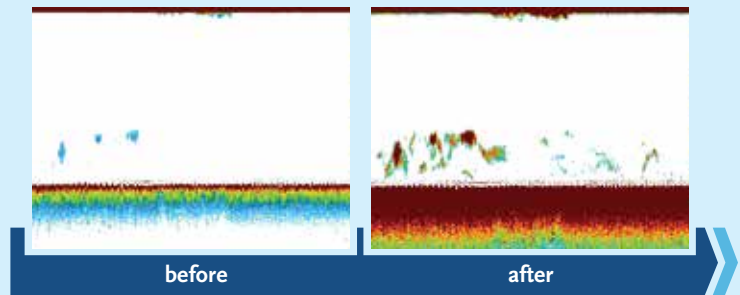


image history

recording history

smart image management

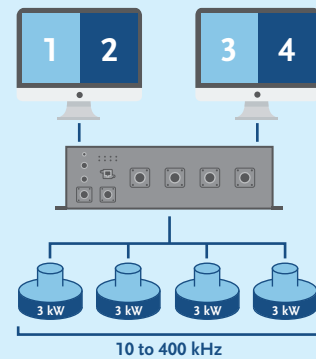
This concept includes a complete set of tools to improve the image output. The system allows up to 7 colour patterns. The user can adjust a wide variety of image settings in real time. The new friendly user interface is also a part of this concept.



two in one concept

The operator can adjust the installation layout to use simultaneously up to 4 transceivers in different frequencies, ranging from 15 to 250 kHz.

By connecting two monitors, you can split the operation mode in two different fish finders.



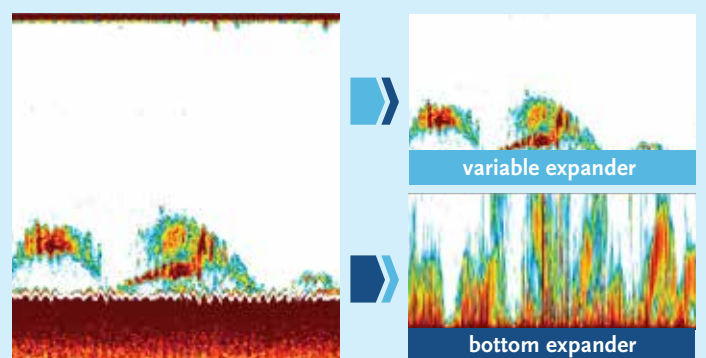
mixer

This tool allows you to mix up to 4 frequencies in one image. With this feature the user can get an improved output because of the synergy obtained by processing the information received in different frequencies as one.

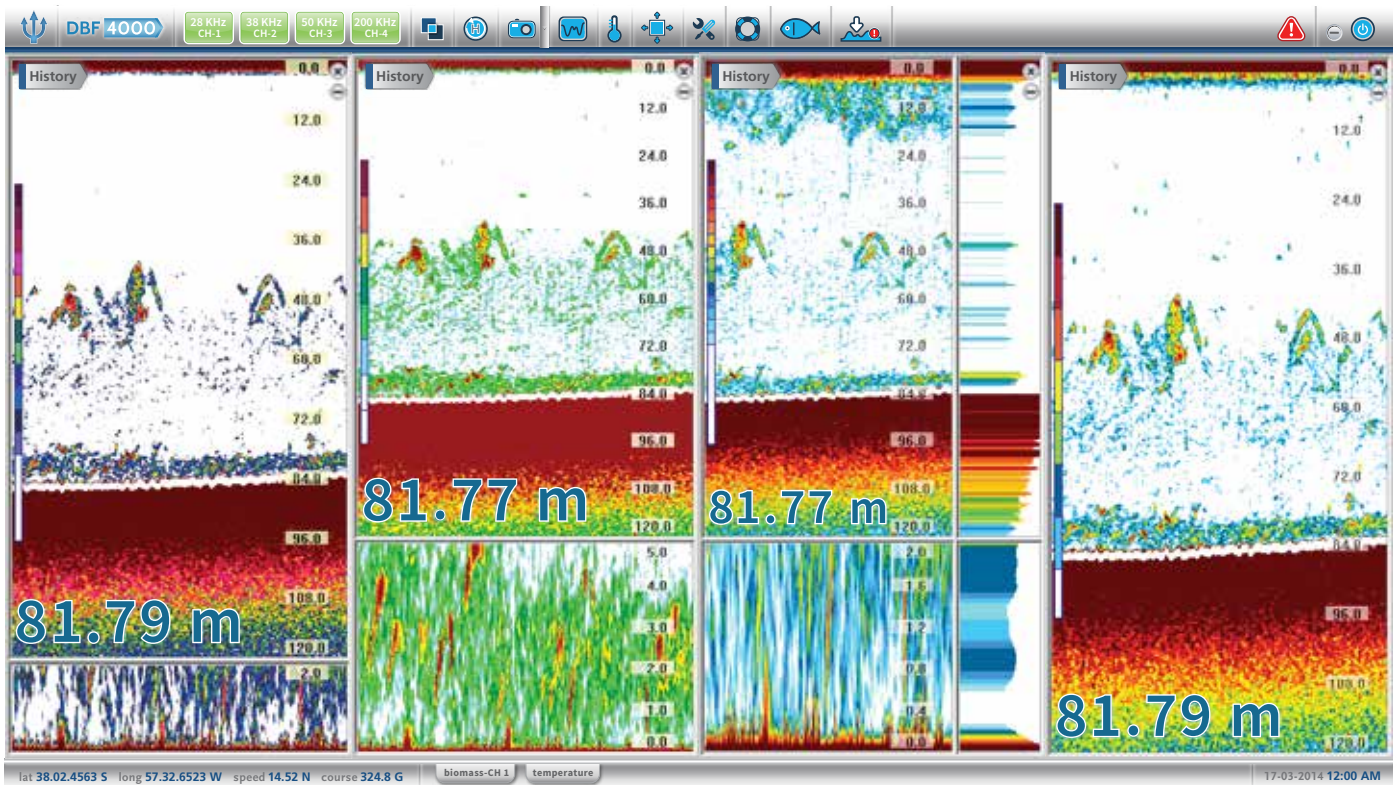


expander

This product has the most powerful expander in the market. The user can set up to **1 meter bottom expander**, which is a very important tool for demersal species trawl fishing. You can also expand the adjustable portion of the image.



Look and feel friendly user interface!



NEW INTERFACE smart and modern. More user-friendly.

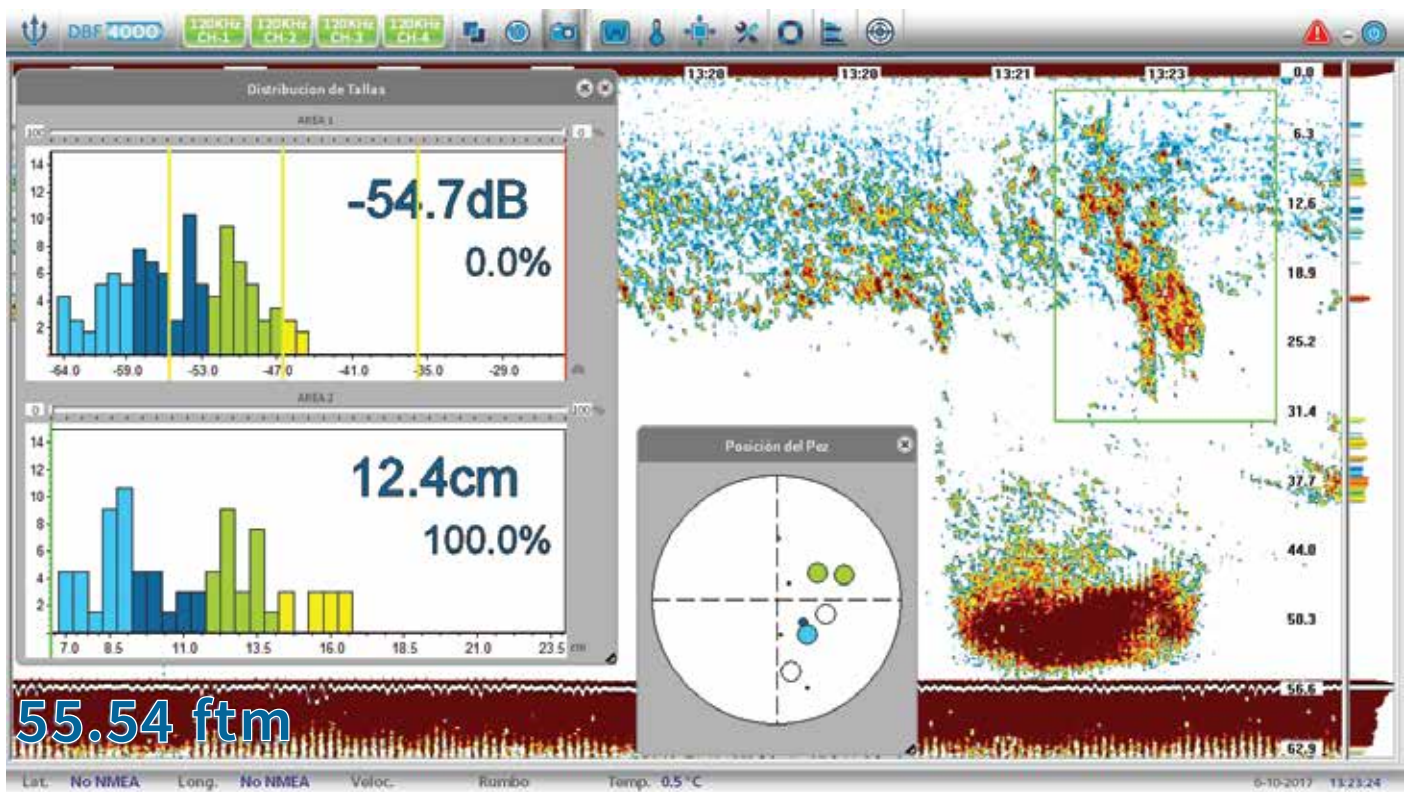
RESIZABLE WINDOWS allows the user to adjust the desired size keeping the desktop clean and organized.

NEW ALARMS and graphic transceiver status indicator.

NEW TOOLBAR with shortcut buttons to get every function faster.

SMART STATUS BAR with all your navigation info.

Split Beam Mode for a sustainable fishing



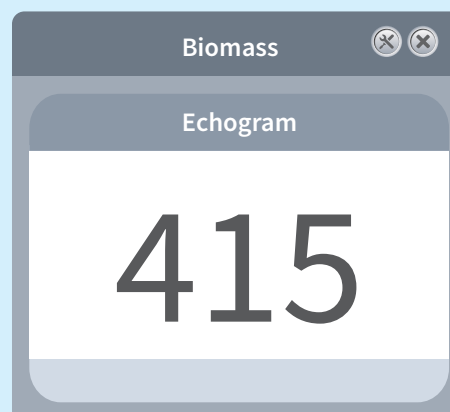
The DBF-4000 includes Split Beam technology capable of estimating, with a high degree of precision, the size of the fish from a shoal or a group of echoes in a selected area.

The equipment displays a size histogram and shows the estimated amount of each range in order to determine if a shoal is sustainable objective.

A circular graphic, which displays the distribution of the echoes under the transducer cone, is also available. This tool allows the user to determine the shoal fish direction.

The 3D views complete a graphic tools menu that helps professional fisherman with real time decisions.

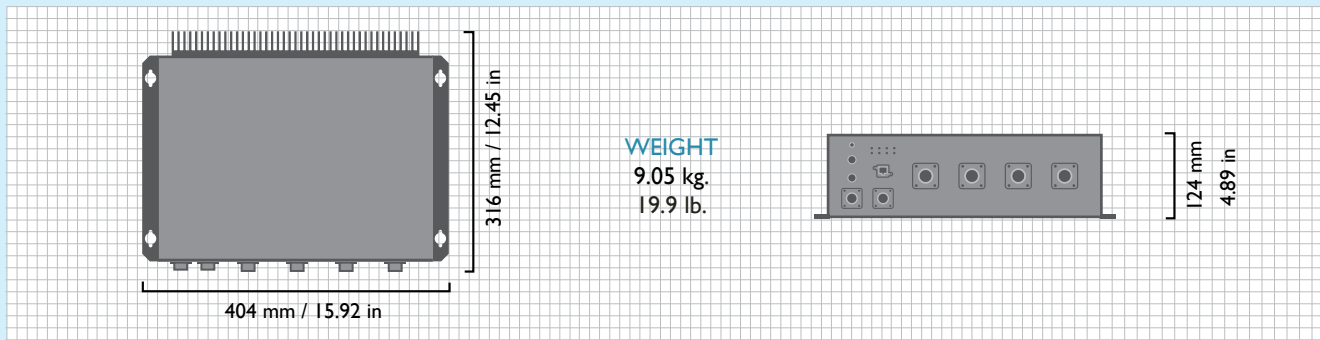
The Biomass Index provides useful information regarding the fish abundance in the selected area or in the full screen, at one given moment. This coefficient, combined with the fisherman's own experience, becomes a valuable piece of information to help deciding whether start fishing or not.



Biomass Window

FISH FINDER | specifications & dimensions

PROCESSOR UNIT



■ GENERAL

Operating Frequencies

From 1 to 4 synthesized transceivers working from 15 to 250 kHz.

Output Power 250 W to 3 kW

Pulse length 0.05 to 2.5 ms

Sound Speed

1410 to 1530 m/s adjustable.

TX Rate

1200 pulse/min max.

Digital Filters

3 noise filters / 2 interference filters / 1 smooth filter

History

Up to 30 working days + Navigational Data

■ DISPLAY

Display

1024x780 px to 1920x1080 px (2 displays)

Color

7/12/15 colours

Display Mode

Day / Night

Ranges

5 to 6400 m (3500 m Split-Beam)

Shift

0 to 6395 m (3495 m Split-Beam)

Marker Zoom/Bottom-lock Expansion Ranges

1 to 6400 m (3500 m Split-Beam)

Display mode

Sounder / Sounder + Fish Loupe / Sounder + Expander /

Sounder + Fish Loupe + Expander

Picture Advance Direction

Right to Left

Picture Advance Speed

4/1, 2/1, Stop, 1/1, 1/2, 1/4, 1/8, 1/16, 1/32, 1/64

External Trigger

Input / Output , Raising / Falling Edge

Alarms

Audio-visual bottom and fish alarm

Language

English / Spanish

Others

Bottom Hardness Graphic / Water Temp Graphic / GPS Data

Graphic / Auto Scale / Internal Pitch and Roll Compensation

■ DATA INTERFACE

NMEA0183 (Ver. 1.5, 2.0 or 3.0)

Input: GGA, GLL, RMC, VTG, GGA, ZDA, PFEC.

Output: DBT, DPT, RMC, Roxann Interface

■ ENVIRONMENTAL CONDITIONS

Temperature

-10°C to 55°C

Humidity

95% non condensed

■ POWER SUPPLY

9-35 VDC / 10 A / 65 W max.

■ EQUIPMENT LIST

Blackbox Unit

Installation Materials / Trackball Unit

User Manual

FOR FURTHER INFORMATION, CONTACT:



ELECTRONICA NAVAL S.A.

Acha 452 - 7603BNJ

Mar del Plata - Bs. As. - Argentina

te. +54 223 4800978 - fax 4894444

ventas@enaval.com.ar

www.enaval.com.ar